



streamsong®

RESORT • GOLF • SPA







GOLF AT ITS PUREST

— FORGET ANY COURSE YOU'VE EVER PLAYED —

Streamsong® offers a golfing experience like no other, in a setting like you've never seen. With a seamless integration of indigenous and awe-inspiring terrain, Streamsong's three spectacular courses inhabit a landscape that belies their Central Florida locale. Instead of flatland, you'll find towering sand dunes and unexpected contours without a distraction or intrusion in sight. Just you, your friends, and the game you love. The way golf was meant to be.

Golfweek's Best Courses You Can Play

Streamsong® Red #17, Streamsong® Black #21, Streamsong® Blue #22

Golf Magazine's Top 100 Courses You Can Play

Streamsong® Red #19, Streamsong® Blue #27, Streamsong® Black #39

Golf Digest - America's 100 Greatest Public Courses

Streamsong® Red #20, Streamsong® Blue #26, Streamsong® Black #34

SPEECHLESS

— WORDS CAN'T EXPRESS WHAT IT'S LIKE HERE —

The undulating terrain at Streamsong captivates your attention, but it's the golf that will take your breath away. 54 holes have been sculpted out of this tranquil setting of steep-banked lakes and towering dunes amidst 16,000 acres of native vegetation and windswept fields of prairie grasses.



Streamsong is the only destination in the world where players can experience three distinct courses designed by these legendary architects—Bill Coore & Ben Crenshaw, Tom Doak, and Gil Hanse & Jim Wagner—in the same location. Streamsong Red, Streamsong Blue and Streamsong Black—three of the most highly acclaimed and widely pursued golf courses in the game today. Revered as a bucket-list destination, Streamsong Resort rivals the greatest golf venues in the world.




Streamsong Red No. 14



Streamsong Red No. 6



An aerial photograph of a golf course hole. A small bridge crosses a body of water in the foreground. The hole is surrounded by lush green grass and sand dunes. The background shows a line of trees and a clear sky.


Streamsong Blue No. 7

STREAMSONG® BLUE

"This is such a good piece of land for golf. The variety of contours created by the mining process is unique for a project in Florida—or anywhere in the Southeast."

– Tom Doak

With its multiple elevation changes, fairways navigating wild grasses and deep-water ponds and huge bunkers that roll off of towering sand dunes, Streamsong Blue seems designed by discovery rather than by intention. Created by Renaissance Golf Design's renowned architect Tom Doak—who already has four designs ranked among the top 100 in the world—Streamsong Blue has been equally well received. Streamsong Blue features spectacular terrain, with rises and falls in elevation, and contours that undulate offering some of the most stimulating holes in golf.

An aerial photograph of a golf course hole. The hole is surrounded by lush green grass and sand dunes. In the background, a large building is visible. The foreground shows a line of trees and a clear sky.

Streamsong Blue No. 8



Streamsong Blue No. 12



Streamsong Red No. 16



Streamsong Red No. 15

STREAMSONG® RED

"...some of the most unusual, interesting and dramatic landforms we have ever encountered...the landscape is different than anything we've ever worked with."

– Bill Coore

Simply put, Streamsong Red is like nothing you've ever played. Designed by the legendary team of Bill Coore and Ben Crenshaw—architects of five designs in the Top 100 in the United States—Streamsong Red is an 18-hole masterpiece. With its Mach 1 greens and winding fairways that meander through decades-old sand dunes, lakes and natural bunkers, Streamsong "is naturally conducive to uncovering great golf holes," says Crenshaw, who himself is a two-time Masters champion.

With its striking landforms, expansive lakes, rolling terrain and stretches of open savannah, Streamsong Red brings drama and strategy into play on each spectacular hole.



Streamsong Red No. 5, No. 6, and No. 7



Streamsong Black No. 17

STREAMSONG® BLACK

"The scale and shape of this landscape and the creative design features we were able to incorporate into this layout make Streamsong Black a fun and strategic course to play."

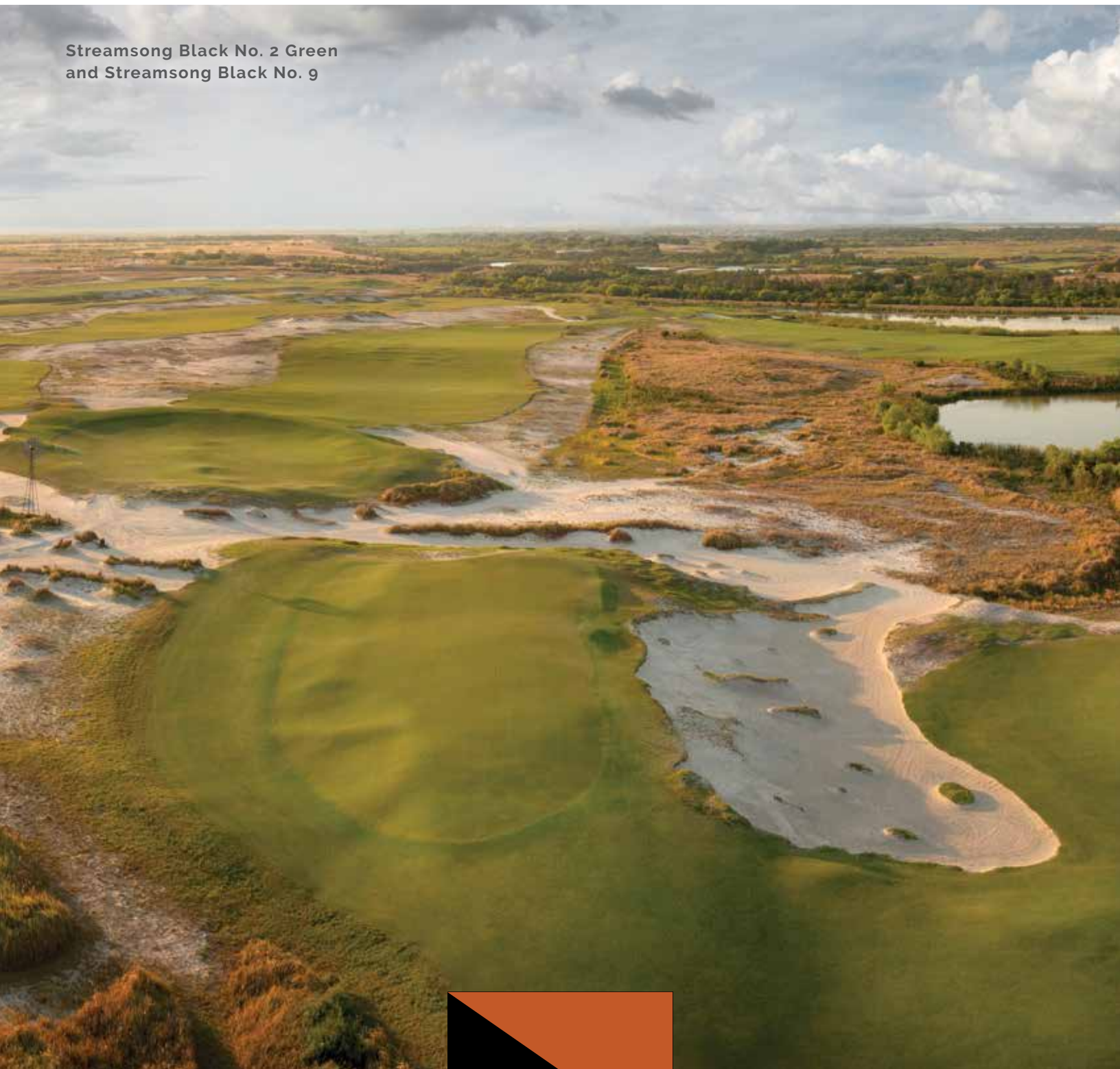
- Gil Hanse

Streamsong Black, designed by acclaimed architect Gil Hanse & Jim Wagner is a dazzling Par-73 championship layout offering breathtaking views of the vast landscape, which includes flowing elevation, rolls, tumbles and sand ridges akin to the Sand Belt region of Australia. This exciting addition to Streamsong is big, bold and features The Gauntlet, a 1.2 acre putting course and The Roundabout, a free-flowing short course and practice area which includes three double green complexes. Streamsong Black is the perfect complement to Streamsong Red and Streamsong Blue.



Streamsong Black No. 5

Streamsong Black No. 2 Green
and Streamsong Black No. 9



GOLF ARCHITECTS



Designed by highly acclaimed architects Gil Hanse and Jim Wagner, Streamsong Black is equally respected as its award-winning predecessors Red and Blue. Hanse & Wagner, designers of the 2016 Olympic Course in Rio de Janeiro, are two of the most talented and entrusted architects in the game, restoring many of America's most prominent private clubs.



Tom Doak, known for his design philosophy of routing around the natural features of the land, created Streamsong Blue to be both strategic and playable. Doak's philosophy behind his minimalist approach to some of the greatest courses in the world was forged at historic St. Andrews in Scotland and continues to awe golfers around the world.



Designed by the legendary team of Bill Coore and Ben Crenshaw—architects of seven designs in the Top 100 in the United States—Streamsong Red is an 18-hole masterpiece. Coore and two-time Masters champion Crenshaw have blended their personal experience and admiration for classic courses to create a style uniquely their own.



The Gauntlet



OUR CLUBHOUSES

Streamsong offers two outstanding clubhouses, each with scenic special event venues and Pro Shops stocked with the latest in logo golf apparel, golf equipment and accessories. The Clubhouse at Streamsong Red and Blue offers 12 exclusively unique guest rooms, a common private gathering room, Restaurant Fifty-Nine and stunning views of the resort's natural surroundings. Clubhouse buyouts are available and include exclusive access to the amenities of the Albatross hospitality room and all 12 guest rooms. The Streamsong Black Clubhouse is home to Bone Valley Tavern, where guests can unwind by the outdoor fire pit or dine alongside breathtaking course views as well as The Gauntlet, an impressive 1.2 acre putting course.



The Bye Hole



Streamsong® Blue

	YARDS	PAR
No. 1	338	4
No. 2	554	5
No. 3	418	4
No. 4	442	4
No. 5	157	3
No. 6	345	4
No. 7	203	3
No. 8	454	4
No. 9	575	5
OUT	3486	36
No. 10	187	3
No. 11	487	4
No. 12	408	4
No. 13	312	4
No. 14	545	5
No. 15	446	4
No. 16	237	3
No. 17	590	5
No. 18	478	4
IN	3690	36
TOTAL	7176	72

Streamsong® Red

	YARDS	PAR
No. 1	474	4
No. 2	555	5
No. 3	404	4
No. 4	330	4
No. 5	453	4
No. 6	185	3
No. 7	527	5
No. 8	147	3
No. 9	312	4
OUT	3387	36
No. 10	486	4
No. 11	434	4
No. 12	500	4
No. 13	535	5
No. 14	181	3
No. 15	474	4
No. 16	208	3
No. 17	403	4
No. 18	540	5
IN	3761	36
TOTAL	7148	72

Streamsong® Black

	YARDS	PAR
No. 1	573	5
No. 2	361	4
No. 3	480	4
No. 4	601	5
No. 5	211	3
No. 6	342	4
No. 7	178	3
No. 8	427	4
No. 9	450	4
OUT	3623	36
No. 10	548	5
No. 11	463	4
No. 12	571	5
No. 13R	441	4
No. 13L	430	4
No. 14	298	4
No. 15	133	3
No. 16	463	4
No. 17	205	3
No. 18	586	5
IN	3708	37
TOTAL	7331	73

CADDIE SERVICES

We believe the best way to experience the game of golf at Streamsong is to walk with a caddie. Caddies come to Streamsong Resort with a range of skills honed at some of the country's most exclusive private clubs and resorts.

STREAMSONG® RESORT

— A FEAST FOR THE SENSES, A HAVEN FOR THE SOUL —

Whether you're planning a buddy golf group, an executive retreat or a corporate meeting and incentive program, Streamsong offers a diverse blend of resort amenities, golf and recreational facilities. Experienced event coordinators and PGA Professionals ensure that every last detail of your golf outing is handled effortlessly.



SOTTOTERRA™

Nestled into the Lodge's lower level is the chic and modern dining room SottoTerra. Expert presentations of classic Italian cuisine use the best that the earth and oceans have to offer.



FIN & FEATHER™

The Southern comfort food inspired menu celebrates the history and bounty of our Southern land with traditional recipes crafted from the finest ingredients the region has to offer.



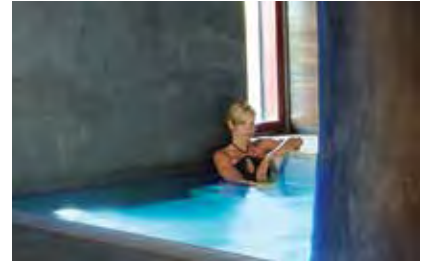
ROOFTOP 360™

Nothing can top a cocktail with a view atop the Lodge's 6th floor at Rooftop 360. Enjoy the sunset overlooking the lake, or linger under the skylight at the bar with a shared plate of small bites and a selection of hand-crafted cocktails.



LEAF LOUNGE™

Stunning floor-to-ceiling panoramic views of the lake and the famous Streamsong sunsets make the atmosphere come to life. Leaf Lounge serves craft cocktails and a delicious assortment of small plates and desserts.



THE LODGE

The Lakeside Lodge at Streamsong was designed in harmony with its natural surroundings and the extraordinary courses that envelop it. Ideal for small, medium, and even large groups, the Lodge features 216 guest rooms and suites, 25,000 square feet of flexible indoor meeting space, 60,000 square feet of outdoor special event venues along with fine and casual dining.

In addition to our nationally ranked golf courses, on-site recreational activities and amenities include sporting clays, guided bass fishing, tennis, archery, a full-service AcquaPietra Spa, fitness center, walking trail, and infinity lakeside pool.



RESTAURANT FIFTY-NINE™ AT THE RED AND BLUE CLUBHOUSE

Offers USDA Prime beef and fresh seafood specially prepared with the level of finesse required by the elusive golf score for which the restaurant is named.



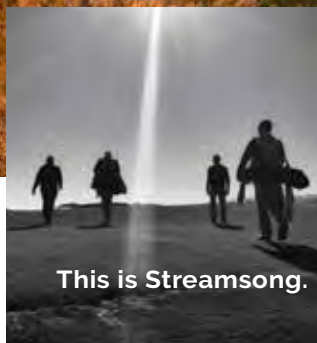
HEMY'S™

Retreat to Hemy's for a cool poolside sip or a relaxed lunch complete with lakeside views. Enjoy crisp salads, hearty wraps, or sweet and savory snacks.



BONE VALLEY TAVERN™ AT STREAMSONG® BLACK

With savory entrées and incredible panoramic views of Streamsong Black, Bone Valley Tavern offers fresh seafood, small plates, and local craft cocktails.



This is Streamsong. Golf at its purest.