

A serene spa-themed photograph featuring three lit candles in dark wooden bowls, a stack of five smooth black stones, and a white towel on a wooden surface.

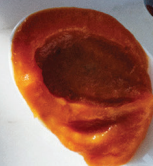
ACQUA

PIETRA

spa

NATUROPATHICA®

All of AcquaPietra Spa treatments feature NATUROPATHICA® products. NATUROPATHICA uses proven ingredients such as seed oils, probiotics and botanical extracts to nourish the skin barrier and enriched formulas with clean cosmeceuticals: plant stem cells, AHAs, retinols and peptides that provide real benefits to the skin.



MASSAGE

Nirvana Signature Stress Relief Massage

80-min

100-min

Experience Nirvana with this deeply revitalizing massage treatment using aromatherapy and deep tissue massage to wring stress out of tension-bound muscles and includes a detailed arm and hand massage to relieve computer/overwork fatigue using **NATUROPATHICA'S Mighty Mint Rescue Cream**. Choose from **NATUROPATHICA'S** four **Aromatic Alchemy** blends of exotic herbs and essences featuring ingredients such as warm and spicy Cardamom, hypnotic Neroli, clarifying Balsam Fir and energizing Holy Basil to re-boot the mind.

Alpine Arnica Deep Tissue

25-min

50-min

100-min

Created especially to relax sore muscles, tendons and stiff joints by using firm pressure, and trigger point therapy. **NATUROPATHICA Alpine Arnica Oil** enhances the muscle health and flexibility while restoring natural muscle balance.

Rest or Balance Aromatherapy

25-min

50-min

100-min

A therapeutic massage using essential oils and slow massage techniques designed to achieve restoration and balance. You can choose between two blends to customize your aromatherapy experience to achieve deep relaxation. **NATUROPATHICA Rest** is a blend of **Lavender Blossoms**; while **NATUROPATHICA Balance** is a blend of **Ginger Root Oil**.

MASSAGE (CONTINUED)

Sports and Wellness with Aromatherapy

25-min

50-min

100-min

Whether preparing muscles for a specific activity or post game stress and tension from overuse; the active stretching and vigorous massage techniques combined with Alpine Arnica muscle and joint oil are guaranteed to improve your overall movement.

Hot River Basalt Stone with Aromatherapy

25-min

50-min

100-min

A deeply relaxing massage using heated River Basalt Stones combined with your choice between Lavender blossoms or Ginger Root blended oil that will melt the stress, and tension right out of sore muscles. The heated stones improve blood flow through the muscle tissue promoting optimal muscle health.

Mother to Be Prenatal

50-min

This massage is customized to the needs and comfort of the expectant mother and is available after the first trimester.

Swedish

25-min

50-min

100-min

This classic relaxation massage uses light to medium pressure and long flowing strokes to promote wellbeing. The Swedish massage aids in circulation, reduces stress and soothes sore joints and muscles while promoting detoxification of the lymphatic system.

Infinite Loving Couples

25-min

50-min

100-min

Enjoy our Swedish Massage side by side in our luxurious couples suite.

MASSAGE ENHANCEMENTS

These add-on services are available in conjunction with any 50-min or 100-min Massage service. They will increase treatment time.

Wild Lime Scalp Treatment

25-min

NATUROPATHICA Wild Lime Revitalizing Scalp & Hair Oil

is warmed and applied to the scalp, neck and shoulders to stimulate circulation and relieve tension.

Peppermint Foot Therapy

25-min

A revitalizing foot and lower leg treatment designed to invigorate tired feet and calves with Peppermint and horse chestnut to improve circulation. Peppermint is known to stimulate; while horse chestnut helps to improve circulation.

Body Scrub

25-min

Gentle exfoliation recommended before a massage to remove dead skin cells. Choose between three scrub blends; **NATUROPATHICA Lemongrass Mimosa, Espresso Mud, or Rosemary Citron Sea Salt.**

Peppermint Arm & Hand Therapy

25-min

Designed to relieve tension and fatigue in the hands and arms utilizing **Mighty Mint Rescue Cream** to stimulate circulation and to promote rejuvenation of the muscles.



FACIALS

Pure Radiance Signature

50-min

80-min

Experience dramatic results with this facial designed to address inflammation, sun drenched, harsh winters and city pollution, which is some of the primary cause of premature aging. The session begins with an exfoliating treatment to sweep away dead surface cells and impurities followed by a layer of **NATUROPATHICA'S** powerful antioxidant **Plant Stem Cell Booster Serum**. This serum is clinically proven to improve the appearance of fine lines and wrinkles, leaving your skin radiant, smooth and firm.

Includes: Skin Consultation, Cleanse, Exfoliation, Mild Extractions, Mask, Facial & Neck Massage

Vitamin C Glow

50-min

80-min

Reignite your skin's youthful luminosity with the ultimate brightening power couple: vitamin C and marine botanicals. To unlock more even, glowing skin, this treatment combines potent, brightening L-Ascorbic Acid with three hydrating, revitalizing algae, including French Algae and Laminaria Digitata Algae. Featuring **NATUROPATHICA'S** **Vitamin C15 Wrinkle Repair Serum** and breakthrough **N. Poeticus & French Algae Brightening Essence**, this facial treatment visibly brightens, firms and improves skin texture and tone.

Includes: Skin Consultation, Cleanse, Exfoliation, Mild Extractions, Mask, Facial & Neck Massage

Re-Vitalize Anti-Wrinkle

110-min

A reparative, regenerating and corrective treatment that combats the signs of early aging. Active ingredients; such as **NATUROPATHICA** Argan plant stem cells and peptides work together to help reduce fine lines and wrinkles while improving skin tone and firmness.

Includes: Skin Consultation, Cleanse, Exfoliation, Mild Extractions, Micodermabrasion, Mask, Pressure Point Facial Massage, Neck & Scalp Massage



FACIALS (CONTINUED)

Moisture Drench

50-min

80-min

Nature's cure for thirsty, moisture-deprived skin. The hydration of this facial quickly replenishes the skin with deeply hydrating botanical blends. **NATUROPATHICA'S Soothing Hibiscus Enzyme Peel** smooths and calms stressed skin; while the **Gotu Kola Healing Balm** leaves the skin radiant and protected from the environmental elements. This facial leaves your skin feeling quenched and rejuvenated.

Includes: Skin Consultation, Exfoliation, Pressure Point Facial Massage, Mask, Hydration

Men's High Performance Rebalancing

50-min

80-min

Customized for men's skin care needs. This balancing facial effectively renews skin tone and texture while helping to soothe and restore devitalized, sun-damaged or razor-burned skin.

Includes: Deep Pore Cleanse, Exfoliation, Extractions, Facial Massage, Mask, Hydration

Refresher Facial

25-min

Refresher Facial uses Naturpathica plant derived ingredients to cleanse, extract, hydrate, and transform your skin to reveal an instant glow.

Restore Back Facial

25-min

50-min

This facial follows the same steps as a traditional facial. The back is first cleansed and exfoliated deeply. The second step removes impurities and imperfection from beneath the skins surface. Then you get to enjoy a 10-minute massage, followed by a mask that is customized to your skin type/conditions. The final step involves toning and moisturizing the back to hydrate and nourish the skin.

FACIAL ENHANCEMENTS

Recommended during any 50-min or 80-min facial service.

Enzyme Power Peel

Designed to treat skin imbalances such as blemishes, hyperpigmentation, fine lines and wrinkles.

Re-Vital Eyes and Lips

Specialized treatment that protects delicate skin while addressing fine lines, dark circles, puffiness and wrinkles using **NATUROPATHICA Vitamin K Brightening Eye Serum** and **Primrose Lip Treatment**.

15% AHA & Vitamin C15 Infusion Treatment

This high-potency treatment helps visible refine the skin by stimulating collagen production, leaving the complexion brightened and dramatically reducing the appearance of fine lines using **NATUROPATHICA Vitamin C15 Wrinkle Repair Serum** and **Glycolic Refining Peel 15%**.

Microdermabrasion

Mechanical exfoliation utilizing a diamond-tip wand to soften fine lines, wrinkles, treat light scarring, improve hyperpigmentation, and reduces age spots and sun damage.

BODY TREATMENTS

Moisture Drench Seaweed Wrap

80-min

This ultimate skin conditioning treatment for the body; deeply infuses depleted minerals back into the skin; leaving the skin silky, smooth and hydrated. Features **NATUROPATHICA Seaweed Body Wrap** and **Sea Fennel Massage Wax**.

Espresso Detoxifying Mud Wrap

80-min

This detoxifying treatment starts with a vigorous exfoliation with Volcanic Pumice and Coffee Arabica to stimulate circulation, followed by wrap with mineral-rich Black Silt Clay and herbal extracts of Indian Sarsaparilla and Honey to help firm the skin.

Lemon Verbena Hydrating Treatment

80-min

A two-step body polish and hydrating wrap; leaving the skin radiant and deeply nourished. Bright citrus notes of **NATUROPATHICA Lemon Verbena** blended with Aloe Vera, Oat Protein and Shea Butter; softens the skin and eases discomfort of dryness. Then following the body polish; the body is drenched in a soothing and smoothing treatment to promote deep hydration.

Luscious Body Scrubs

50-min

Our luxurious scrubs, leave your skin feeling soft and silky while giving a beautiful glow. Choose from three blends; **NATUROPATHICA Lemongrass Mimosa Scrub**, **Espresso Mud Scrub**, or **Rosemary Citron Sea Salt Scrub**.



MANICURE & PEDICURE

Man-E-Cure

25-min

For the Gentleman's hands. This treatment grooms the nails and cuticles; followed by a deep moisturizing treatment.

Includes: Nail Trimming, Nail Buff, Cuticle Care, Hand Massage

Man-E-Pedicure

25-min

For the Gentleman's feet. This treatment spruces up the feet and grooms the nails and cuticles.

Includes: Nail Trimming, Nail Buff, Cuticle Care, Foot Massage

Indulgence Signature Manicure

60-min

This highly reparative manicure uses and uplifting **NATUROPATHICA Rosemary Citron Sea Salt Scrub** to polish overworked hands. Then a nutrient – rich Seaweed wrap for deep repair and intense hydration is applied followed by a hydration application.

Includes: Nail and Cuticle Care, Exfoliation, Treatment Mask, Hand Massage, Polish application

Indulgence Signature Pedicure

60-min

This Signature pedicure begins with an aromatic soak with **NATUROPATHICA Sweet Birch Magnesium Bath Flakes** to soothe and soften the skin, followed by **NATUROPATHICA'S** uplifting **Rosemary Citron Sea Salt Scrub** to polish well worked feet. A nutrient-rich Seaweed wrap is applied and feet are wrapped in warm towels for deep repair. To finish; **NATUROPATHICA Mighty Mint Rescue Cream** is applied to restore hydration and promote circulation.

Includes: Nail and Cuticle Care, Exfoliation, Hydrating Mask, Foot Massage, Polish Application



MANICURE & PEDICURE (CONTINUED)

Classic Manicure	30-min
Classic Pedicure	30-min
French Manicure	45-min
Gel Manicure	50-min
Gel Pedicure.....	50-min

WAXING SERVICES

Lip / Brow / Chin	20-min
--------------------------------	---------------

HAIR SERVICES

Shampoo & Style Short Hair.....	30-min
Shampoo & Style Long Hair	60-min
Ladies Haircut short.....	60-min
Ladies Haircut Long	80-min
Deep Condition (includes blow dry).....	60-min
Men's Haircut.....	30-min

SPA ESCAPES

Gentleman's Spa Escape 3 hours

50 minute Sports and Wellness with Aromatherapy

50 minute Gentleman's High Performance Balancing Facial

60 minute Gentleman's Man-E-cure & Pedicure

Tranquility 2 hours

50 Minute Rest or Balance Aromatherapy Massage

25 Minute Peppermint Foot Treatment

50 Minute Moisture Drench Facial

Rejuvenation 3.5 hours

80 Minute Moisture Drench Seaweed Wrap

50 Minute Pure Radiance Signature Facial

30 Minute Classic Manicure & Classic Pedicure

Custom Escape Minimum 3 services. Pricing Varies

Create your own escape from any of the services on our Menu.

Please contact our spa coordinators who will be happy to assist in planning your spa experience.

COUPLE'S PACKAGES

Romantic Getaway 2 hours

25 Minute Body Scrub

50 Minute Swedish Massage

25 Minute Peppermint Foot Treatment

25 Minute Wild Lime Scalp Treatment

Private Pool Use

Couples Reconnect 3.5 hours

80 Minute Moisture Drench Seaweed Wrap

50 Minute Swedish Massage

25 Minute Peppermint Foot Treatment

25 Minute Wild Lime Scalp Treatment

Private Pool use

Custom Couple's Package

Create your own couple's package from any of the services on our menu. Please contact a spa coordinator, who will be happy to assist you in planning your spa experience.



SPA JOURNEY

Upon arrival you will receive a complimentary robe, slippers, private locker, complimentary tea, fruit infused water, crisp green apples and gourmet Trail Mix. We encourage you to explore the spa to prepare your mind and body for treatment. Enjoy unlimited use of our facilities during your stay, to include: spa relaxation pools, co-ed wet suite, steam room and sauna.

Arrival Time. You are encouraged to arrive 15 minutes minimum prior to your appointment in order to complete check in orientation. Arriving late will simply limit the time of your treatment, thus lessening its effectiveness and your pleasure. Your treatment will end on time so the next guest will not be delayed. The full price of your treatment will be charged.

Spa Attire. Robe and slippers are provided for use while at the spa. Bathing suits are required for use of the steam, sauna and relaxation pools.

Groups and Events. The spa is the perfect environment to celebrate birthdays, bridal parties, and work functions. Our spa coordinators will be happy to assist you in scheduling your group or event.

Scheduling an Appointment. To schedule an appointment for the perfect treatment please speak with our Spa Receptionist who will guide you to the right choice. To ensure your preferred time and service is available; we recommend advanced booking.

Health Questions. When making reservations; please notify us of any health concerns, physical ailments or disabilities you may have.

Spa Etiquette. Our Spa environment is one of relaxation and tranquility. Please respect all spa guests' right to privacy and serenity. The Spa is a mobile device, camera, video recorder, pager and smoke free zone. Spa Voices must be utilized in the relaxation pool area while treatments are in session. The Spa is an adult only facility – 18 years and older. Guests 16 yrs. and under may use the salon.

Pregnancy. We have specially designed treatments for the Mother to Be (please note there are some restrictions during the first trimester) and nursing mothers. Please allow our Spa Coordinator to guide you in selecting treatments that are most suitable for you during this special time.

Cancellation Policy. We require a 72 hour notice of cancellation. Appointments cancelled thereafter will incur a 100% charge.

Gift Cards. Gift cards are available and are an ideal a gift for that special someone. Please contact AcquaPietra Spa for details.

Prices. All prices are quoted in U.S. Dollars and are subject to change without prior notice.

Spa Service Charge. For your convenience, a 20% service charge will be added to each spa service received. 18% is dispersed to the spa staff members who served you during your spa visit. Additional gratuities are at your discretion.



Spa Reservations: 855.442.7069
reservations@streamsongresort.com

Spa Establishment License #MM31869



1000 Streamsong Drive | Bowling Green | Florida 33834 | USA

www.streamsongresort.com